

£1,500 PCM
Harwood Close
Welwyn Garden City, AL8 7SN

PROPERTY SUMMARY

Nestled in Welwyn Garden City's west side, this two-bedroom terrace home offers family living at its finest. With excellent schools, town centre access, and a warm, well-decorated interior, it's a haven for comfort and convenience. The open-plan living and dining room leads to a charming garden overlooking playing fields. The modern kitchen, two bedrooms, and stylish bathroom complete the package. Located close to Welwyn Garden City Town Centre with its array of shops and amenities, this property is a must-see for those seeking the perfect blend of suburban tranquillity and urban convenience.

2



1



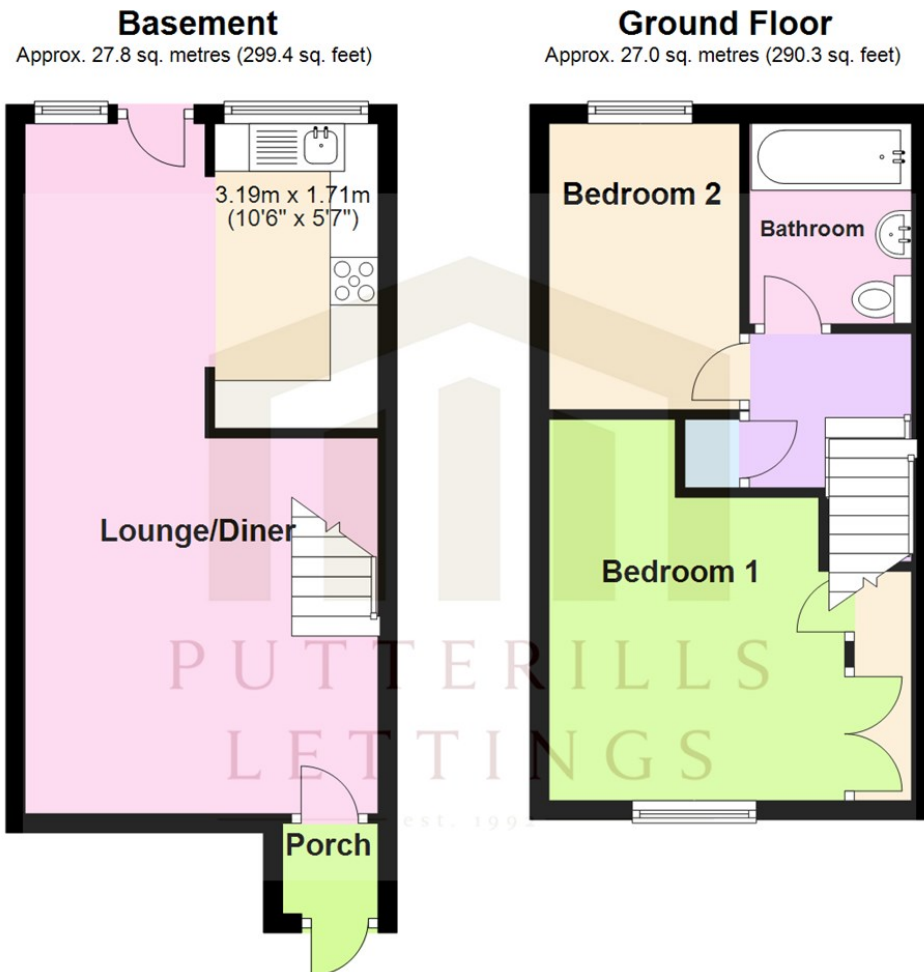
1











Total area: approx. 54.8 sq. metres (589.7 sq. feet)

Approximate measurements not to scale for room identification purposes only
Plan produced using PlanUp.

LOCAL AUTHORITY

Welwyn and Hatfield

TENURE

COUNCIL TAX BAND

C

VIEWINGS

By prior appointment only

Energy Efficiency Rating		
	Current	Potential
Very energy efficient - lower running costs		
(92 plus) A		89
(81-91) B		
(69-80) C	71	
(55-68) D		
(39-54) E		
(21-38) F		
(1-20) G		
Not energy efficient - higher running costs		
England & Wales	EU Directive 2002/91/EC	

Agents Note: Whilst every care has been taken to prepare these particulars, they are for guidance purposes only. All measurements are approximate and are for general guidance purposes only and whilst every care has been taken to ensure their accuracy, they should not be relied upon and potential buyers/tenants are advised to recheck the measurements



OFFICE ADDRESS

Putterills Lettings
123 London Road
Knebworth
SG3 6EX

OFFICE DETAILS

01462 419333
lettings@putterills.co.uk
www.putterills.co.uk